



ASD & ADHD Diagnostic Service

WWW.TOTALCHILDRENTHERAPY.COM



ASD & ADHD Diagnostic Service

BACKGROUND

We are a gold standard service that follows NICE guidelines. Therefore, any diagnostic decision made by our team is accepted by other health care professionals around the country, schools and local authorities.

AVAILABILITY

Please ask for next availability - we do also run a late cancellation list.

INITIAL CONSULTATION

For everyone, we always begin by offering you an initial consultation to see Dr Naeem Mughal, consultant community paediatrician. This is a stand-alone appointment and ensures families are not paying for the 'whole' process when it is not appropriate.

The fee for this first part is **£550**.

Your child and both main care givers are welcome to attend the initial consultation at the clinic. The initial consultation is an informal meeting with the consultant that can last up to 90 mins.

The paediatrician will chat with you and your child, and get a good sense of the timeline and history of their life. Dr Mughal may go over or ask more about, some of the questions in the pre-assessment form. We do understand that sometimes young people find it difficult to speak during this consultation, this is not a problem.



Following the initial consultation

At the end of this appointment the paediatrician will summarise and explain what the next steps are.

The paediatrician will carefully consider the information provided prior to and during the consultation and then offer one of the following five options.

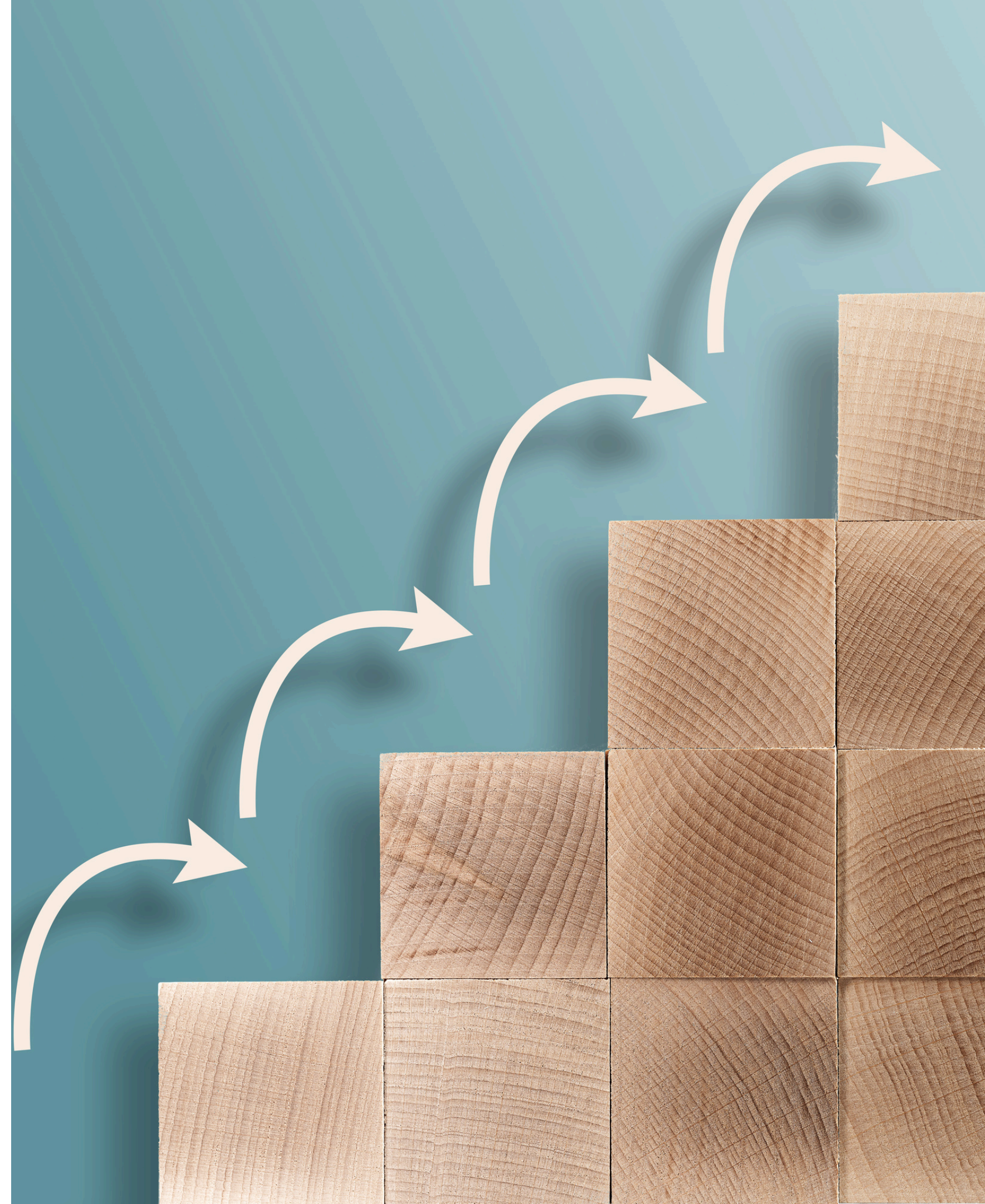
Available options

Option 1 - Discharged with advice, no further action required:

A consultant's letter will be written to your GP summarising your visit - you will also receive a copy of this.

Option 2 - Discharged with advice and referred to another service:

A consultant's letter will be written to your GP - you will also receive a copy of this too - summarising your visit and a referral will be made to any relevant service. Further details will then be supplied.



Options continued

Option 3 - Referral on to our ADHD pathway.

Our ADHD service is designed for young people aged between 6-17 years of age - as long as they are in full time education, as school play a part in this process.

- A consultant's letter will be written to your GP summarising your initial visit - you will also receive a copy of this.
- Both you and school will then be asked to observe your child for the same 4 week period and then asked to complete electronic forms, which will be emailed to you and school.
- A 60 min developmental assessment will also be offered at the clinic and the same therapist will then do a school visit which will consist of a 30 minute observation during a transition period plus liaison with school staff.
- Once all of the relevant information is collated, a follow up appointment with the paediatrician will be offered, and the diagnostic decision will be given.
- A second letter will then be written to your GP (you will also receive a copy of this) summarising the process and diagnostic decision and making some recommendations, based on the assessment findings.

The fee for Option 3 is £800.

Options continued

Option 4 - Referral on to our ASD pathway.

The ASD service is designed for young people of school age from Reception to Year 13.

Referrals are often made when a family, school or other professionals have concerns that the child may be struggling with social skills, learning and/or behaviour due to a possible underlying diagnosis. They may also be struggling to attend school for whatever reason.

Our ASD assessment includes 2 paediatrician appointments (the initial appointment and a follow up at the end of the process to feed back all of the results and the diagnostic decision), a psychology assessment, an ADOS (Autism Diagnostic Observation Schedule) assessment and a full higher level SLT assessment. The multi-agency team meet prior to the final paediatrician appointment to discuss the findings and results and any diagnostic decision is made as a team.

At times the paediatrician may request some additional testing as part of the process. These additional assessments do carry 'add on fees' but will always be discussed with you first.

- Cognitive assessment: £550 (normally £850 when not coming through the pathway)
- Cognitive assessment with ABAS: £700 (normally £1050 when not coming through the pathway)
- DCD (Dyspraxia) Assessment: £350 (normally £550 when not coming through the pathway)

No written summary is provided after the first appointment, as this consultation becomes the first stage in the pathway. School will be invited to have a voice in this process.

The fee for Option 4 is £1,900.

Options continued

Option 5 - Referred onto both our ASD and ADHD pathways:

Both these pathways can run alongside- if this is the case, just Connors forms will be requested from home and school.

The developmental assessment and school visit will not take place as much of this information will be gathered during the ASD assessment. The full ADHD fee will not therefore be applied, but there will be a £250 'add on' fee.

The total fee for Option 5 is £2,150.

(Total calculated as follows: ASD fee charged £1,900 + full ADHD charge not applied; £250 'add on' fee only)

NB: For all Options, encrypted electronic copies of reports will be made available as soon as they are written.



What families say about the service

"I want to thank you and the doctor so much for your help in discounting ADHD and autism as xx's diagnosis. The doctor was so thorough and so friendly. He had an amazing ability to strike up a rapport with xx in such a short period of time. He had a keen sense of humour and a huge amount of empathy. He made me, my wife and xx feel comfortable and absolutely confident in him.

It really is a great service you provide and I shall be recommending it to clients and friends. Once again, thank you so much."

"We found the process from start to finish very swift, and within a month we were able to complete all the assessments we needed for our child and have the evidence required to send to relevant departments to apply for continued support"

"All professionals were incredibly supportive and helpful and xx was spoken to so he could understand all elements."

"I can't fault you. Just keep up the great work you are doing."



"All the team were extremely welcoming and made xx feel very comfortable. It was a very respectful experiences and we are so please to have gone through the process with TCT. We could not fault your service or ask for more."

"Thank you for all the diagnosis paperwork, I'm so happy we chose TCT you have all been amazing."

"The way the staff were with my son was very positive and caring."

"Exceptional! No complaints at all!"

Testimonials continued



"Good communication at all times, helpful friendly staff."

We wouldn't hesitate to recommend the Paediatric Led Service or any of the other services that Total Children's Therapy offer".

"After waiting for years for assessments to happen with the NHS we felt desperate that our child was still not receiving the help they so desperately needed. Their difficulties had taken over their entire life and without the right assessments, we were unable to progress with applications for additional support.

It was such a huge relief to discover Total Children's Therapy offered this service, and we felt confident that their team would be able help our child again, especially since it was one of their team that correctly identified the problem our child was having approx. 5 years earlier when we first brought our child to Total Children's Therapy. Even then they were able to pick up on certain traits that were not even obvious to us at the time, so we must give praise to their knowledge and skills.

"The understanding of staff and how they made my daughter feel calm and less nervous. Providing social stories and offering reassurance and advice."

"Very professional and informative from start to finish. We never felt rushed and the Doctor very kind, explained things clearly and answered all questions questions."



FOR FURTHER DETAILS OR TO BOOK

Contact Us

TOTAL CHILDREN'S THERAPY
POOLE ROAD MEDICAL CENTRE,
7 POOLE ROAD
BOURNEMOUTH
BH2 5QR

TEL: 01202 743674 MOBILE: 079 394 10048

EMAIL: INFO@TOTALCHILDRENSTHERAPY.COM

WWW.TOTALCHILDRENSTHERAPY.COM

